



Masonry Division of  
Keene Building Products

# MOISTURE MANAGEMENT FOR MASONRY

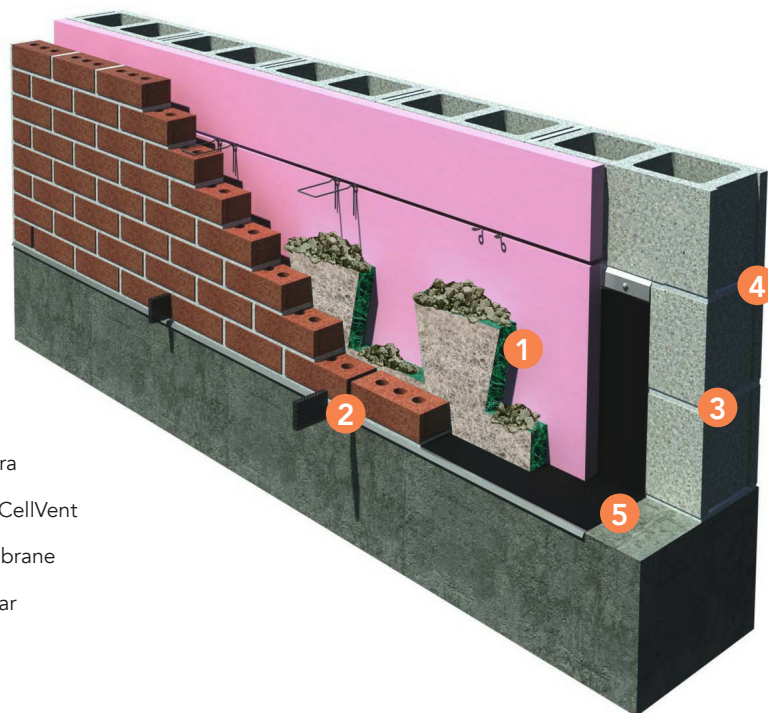


## Installation Instructions/Packing Slip

This package contains 100 LF of 1", 1.5" or 2" MortarNet Ultra

### Installation Instructions

1. After the first one or two courses of bricks are laid, place a continuous row of MortarNet Ultra in cavity or collar joint on flashing (trapezoidal side up) against inside of outer wythe at base of wall.
2. Install directly on flashing at base of wall, over all wall openings, shelf angles, sills or lintels.
3. Install MortarNet Ultra at every floor level. For wall-cavities that exceed 11' in height, place an additional continuous trapezoidal strip on wall reinforcing anchors/ties at every 9' to 11' of wall height.
4. Flashing should extend from bottom to at least 6" above the top of MortarNet Ultra, as should any other materials used to fill space between the MortarNet Ultra and inside cavity surface.
5. If 1", 1.5" or 2" thick MortarNet Ultra is used, no more than 1/4" should be left between MortarNet Ultra and cavity's inside surface. MortarNet Ultra is compressible to allow for variations in wall cavity widths.



- 1 MortarNet Ultra
- 2 WeepVent or CellVent
- 3 Flashing Membrane
- 4 Termination Bar
- 5 Drip Edge

