



Moisture Management For Masonry

MortarNet™

With Insect Barrier™

Technical Data Sheet

In masonry cavity walls, mortar collection above the flashing and weep hole levels is vital for proper masonry cavity wall performance and to prevent water damage. In today's walls, it's common to see a 2" cavity reduced to the minimum requirement of 1" with the inclusion of insulation, so the need for better ventilation is essential to keep the wall dry and trouble-free. MortarNet™ with Insect Barrier™ suspends mortar droppings above the flashing and weeps, so they stay clear and unobstructed. The patented Insect Barrier helps deter insects from entering the cavity through the weep holes. Its NEW design using a structural strand polymer mesh allows moisture to flow to the weeps and significantly greater airflow within the cavity to promote drying.

Benefits

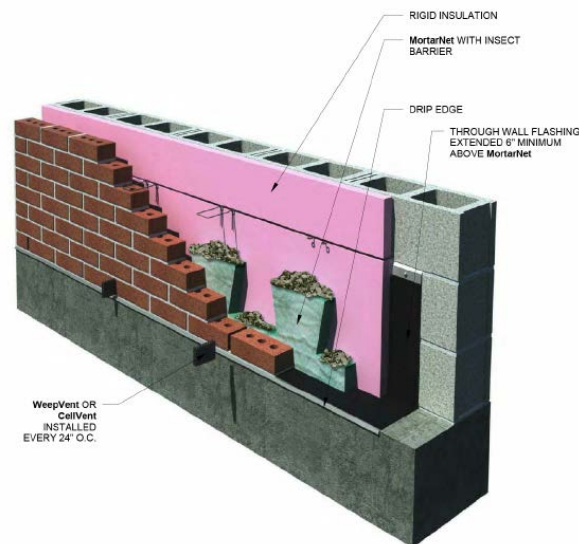
- Breaks up and suspends mortar droppings above the flashing on two levels so weeps stay open
- Structural strand polymer mesh construction provides hundreds of pathways for moisture to exit the cavity
- Insect Barrier helps prevent wall damage and health hazards from insect infestations
- Is very permeable to air, water and water vapor due to the low fiber density of the non-woven structure
- Helps prevent efflorescence, damage from freeze-thaw cycles and mold growth
- Easy to transport, handle and cut, even on scaffolding
- Installs easily on brick ties in multi-story cavity walls
- Recycled content helps with LEED certification
- Helps eliminate callbacks to repair moisture damage
- Provides masons and building owners with a greater peace of mind

Sizes and Packaging

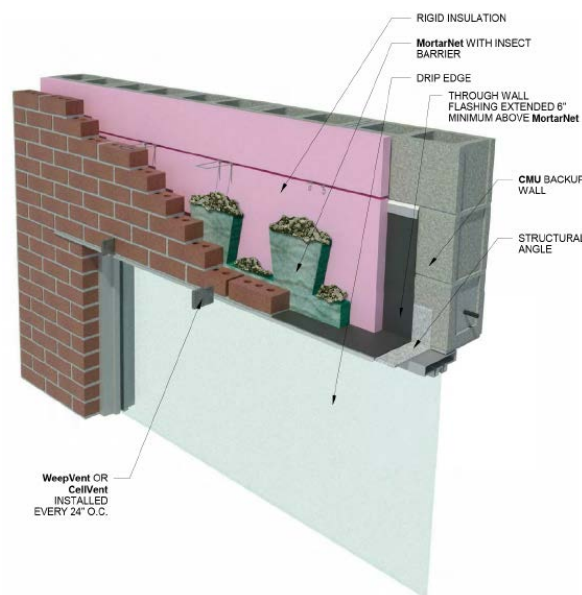
THICKNESS	HEIGHT	LENGTH	LF/BOX	BOXES/PALLET
3/8"	10"	5'	50 pieces / 250 LF	24
1"	10"	5'	20 pieces / 100 LF	24
1½"	10"	5'	20 pieces / 100 LF	15
2"	10"	5'	20 pieces / 100 LF	15

Recycled Content

THICKNESS	RECYCLED CONTENT
3/8"	40% Post-consumer
1"	40% Post-consumer
1½"	40% Post-consumer
2"	40% Post-consumer



MortarNet with Insect Barrier Wall Base Detail



MortarNet with Insect Barrier Window Head Detail