



Moisture  
Management  
For Masonry

# CellVent™

## CELLVENT™ KEEP WEEP HOLES OPEN, INSECTS AND DEBRIS OUT

### Economical protection for masonry cavity walls

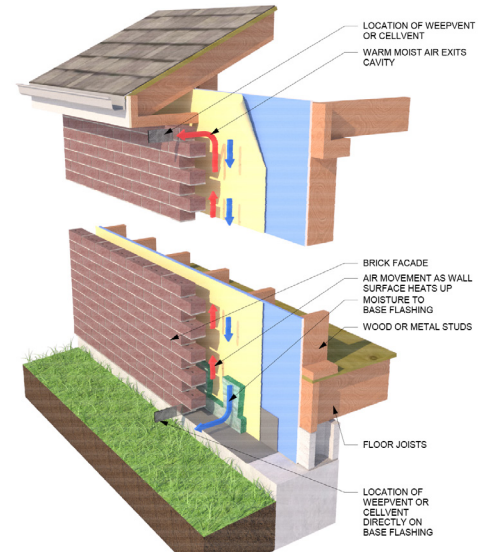
CellVent for masonry cavity walls helps ensure that moisture can migrate out and air can circulate into the cavity, and that insects can't enter the cavity through the weep holes.

### Features

- Made of durable polypropylene (tested in conformance with ASTM D2240, D790B, D638, and D1238B)
- Available in Black, Brown, Cocoa, Tan, Gray, White, Clear
- UV resistant

### Benefits

- Very cost effective
- Helps prevent spalling from freeze/thaw cycles, efflorescence and wet basements by:
  - Allowing moisture to migrate out of the cavity so moisture can't build up
  - Allowing air to circulate into the cavity so the cavity can dry quickly
  - Helping prevent pressure differentials, so moisture is not forced into the cavity
  - Preventing insects and debris from entering the cavity and blocking the weep holes
- Very lightweight and easy to handle
- Requires no sealants or fasteners for installation
- Fast and easy to install in both new construction and restoration projects
- Can be used at the top of the wall to help improve air circulation in the cavity
- Will not degrade, oxidize, or react with common building materials
- 100% compatible with standard weep hole designs
- Helps prevent call-backs and repairs due to moisture damage in the cavity
- Helps protect builders and designers from legal issues resulting from moisture damage
- Clear instructions, extensive product support, and high quality materials help assure installations to specs



CellVents help ventilate the top and bottom of wall



Available in Black, Brown, Cocoa, Tan, Gray, White, Clear

CellVent™ is most effective when installed in combination with MortarNet with Insect Barrier™, MortarNet WallDefender® HouseNet™, LathNet™ or WallNet®. Visit [mortarnet.com](http://mortarnet.com) to learn more