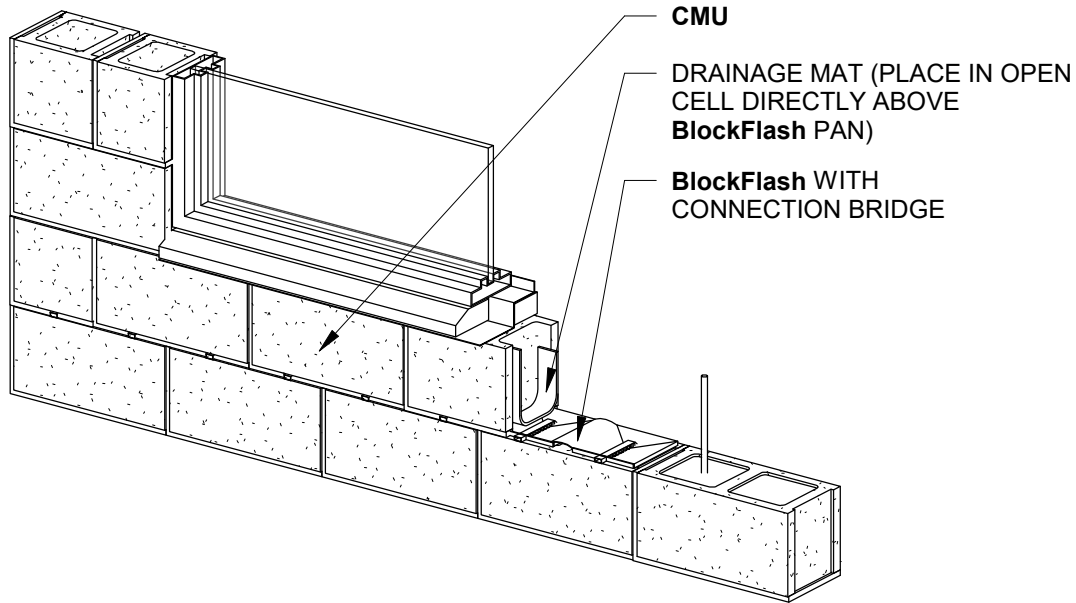


NOTE:  
**BlockFlash** IS AVAILABLE FOR 8",  
10" AND 12" CMU

**SINGLE-WYTHE SILL**



CMU

DRAINAGE MAT (PLACE IN OPEN  
CELL DIRECTLY ABOVE  
**BlockFlash** PAN)

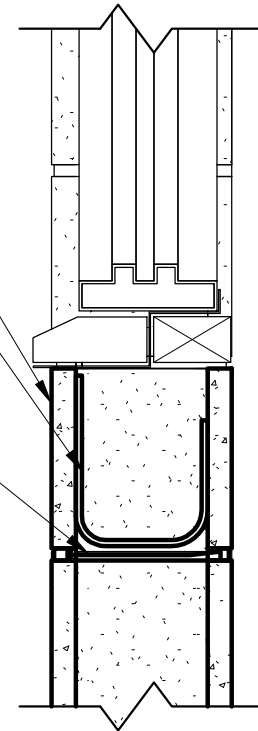
**BlockFlash** WITH  
CONNECTION BRIDGE

**SINGLE-WYTHE  
MASONRY LINTEL**

CMU

DRAINAGE MAT  
(PLACE IN OPEN  
CELL DIRECTLY  
ABOVE **BlockFlash**  
PAN)

**BlockFlash** WITH  
CONNECTION BRIDGE



**PERSPECTIVE VIEW**

**SECTION VIEW**



Moisture  
Management  
for Masonry

6575 Daniel Burnham Dr., Suite G, Portage, Indiana 46368  
P 800 664 6638 F 219 787 5088  
www.mortarnet.com



WINDOW SILL DETAIL