



## Installation Instructions/Packing Slip

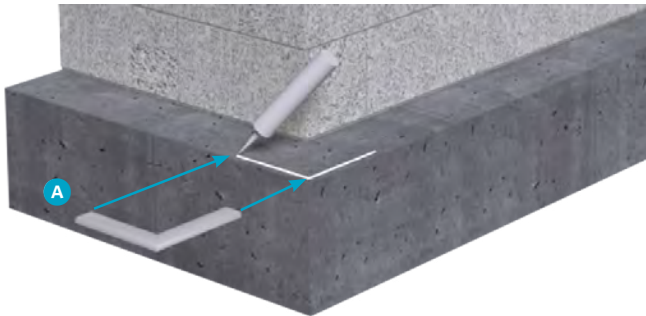
### INSTALLATION GUIDE A TotalFlash Installed Behind Rigid Insulation Board

**Notes:**

- The use of Carborundum Saw blades to cut the Stainless Steel Drip Edge can result in a slight surface rust on any exposed metal.
- Muriatic Acid at any dilution is not recommended on Stainless Steel.
- Uses a 5/32" Drill Bit & 5/16" Nut Driver

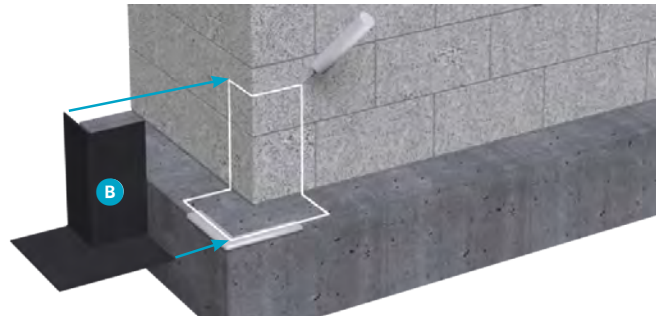
#### 1 STEP ONE

Apply sealant / adhesive to prefabricated Stainless Steel Corner **A** using 1 bead of adhesive.



#### 2 STEP TWO

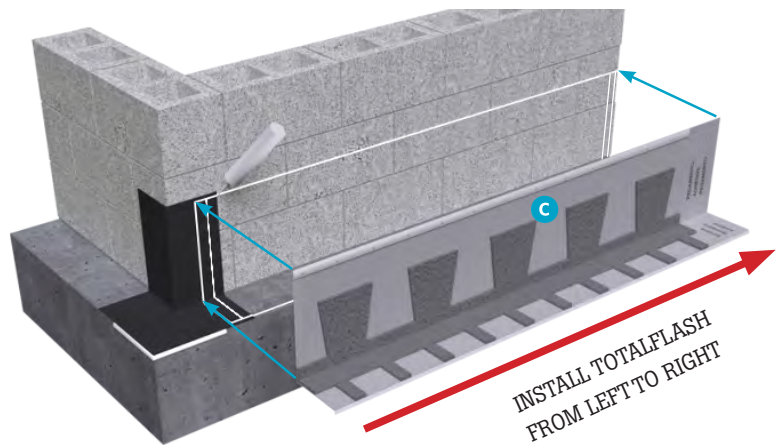
Install pre-formed 14" Corner Boot **B** using 1 bead of sealant / adhesive.



#### 3 STEP THREE

Begin TotalFlash installation at the leftmost corner using the TotalFlash starter strip.

Install starter strip **C** adjacent to corner drip using sealant / adhesive applied horizontally behind termination bar and drip edge and two beads vertically at ends of TotalFlash panel as shown to the right. Install subsequent sections of TotalFlash from left to right.



**Sealant / Adhesive sets up quickly:**

*Install Drip Edge turn down bend, flush with the top corner of the veneer material. Install TotalFlash without a Drip Edge flush with the face of the veneer material following all current published industry standards. Create the crease at Drip Edge & backup wall until tight. Work the TotalFlash up the wall creating a smooth tight fit. Attach Termination Bar to the backup wall. Termination Bars may not align horizontally.*



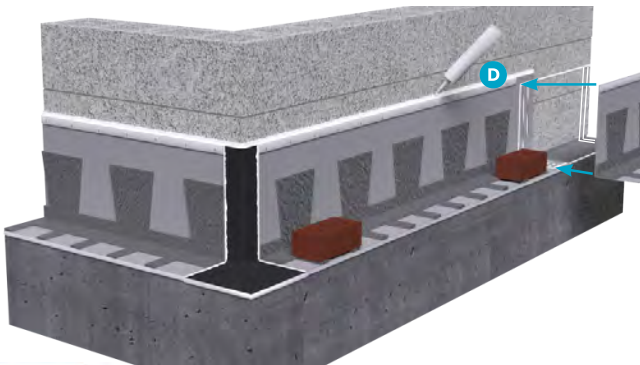
## Installation Instructions/Packing Slip

2/8

4

### STEP FOUR

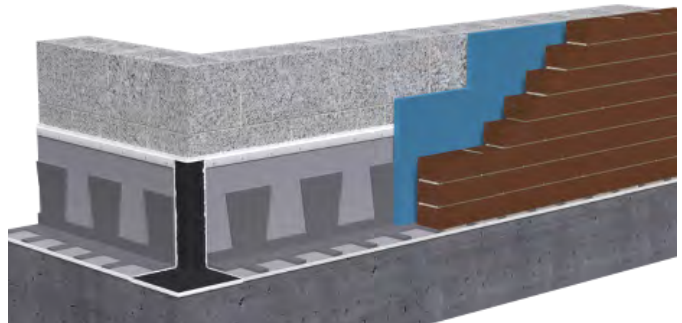
Install remaining sections using the lap system and sealant / adhesive. Caulk top of termination bar **D**. Loose brick units can be used to temporarily hold down TotalFlash while sealant / adhesive cures.



5

### STEP FIVE

Install remaining rigid board insulation over TotalFlash. Lay a mortar bed directly atop the TotalFlash weep tabs and install the brick veneer. For proper drainage, ensure the tips of the weep tabs are exposed when tooling the first mortar joint.



## INSTALLATION GUIDE B

### TotalFlash Installed in Front of Rigid Insulation Board

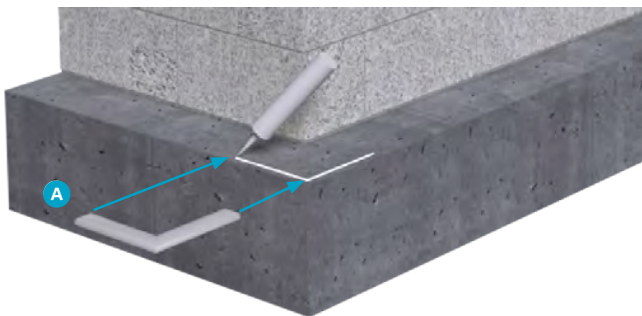
**Notes:**

- The use of Carborundum Saw blades to cut the Stainless Steel Drip Edge can result in a slight surface rust on any exposed metal.
- Muriatic Acid at any dilution is not recommended on Stainless Steel.
- Uses a 5/32" Drill Bit & 5/16" Nut Driver

1

### STEP ONE

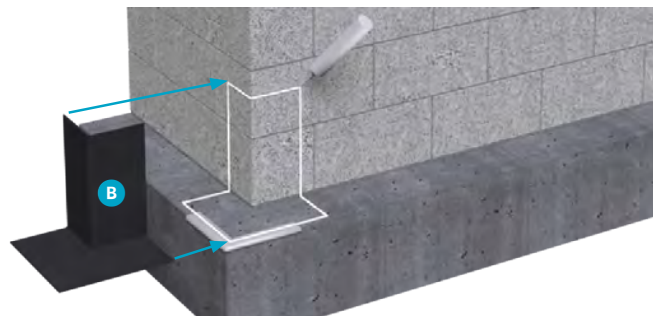
Apply sealant / adhesive to prefabricated Stainless Steel Corner **A** using 1 bead of adhesive.



2

### STEP TWO

Install pre-formed 14" Corner Boot **B** using 1 bead of sealant / adhesive.



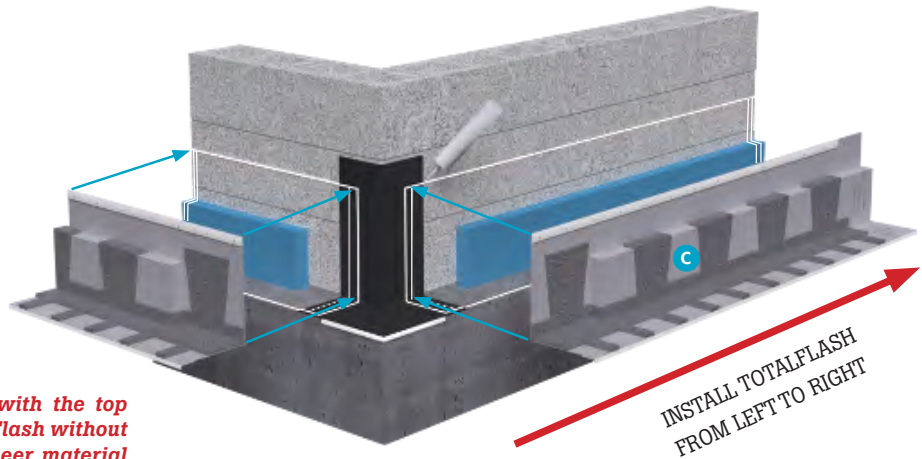


## Installation Instructions/Packing Slip

### 3 STEP THREE

Install 8" high sections of rigid insulation board against back up wall.

Begin TotalFlash installation at the leftmost corner using the TotalFlash starter strip **C** adjacent to corner drip using sealant / adhesive applied horizontally behind termination bar and drip edge and two beads vertically at ends of TotalFlash panel as shown to the right. Install subsequent sections of TotalFlash from left to right.



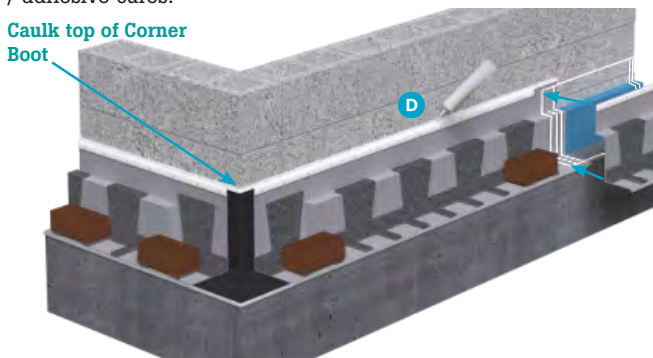
**Sealant / Adhesive sets up quickly:**

*Install Drip Edge turn down bend, flush with the top corner of the veneer material. Install TotalFlash without a Drip Edge flush with the face of the veneer material following all current published industry standards. Create the crease at Drip Edge & backup wall until tight. Work the TotalFlash up the wall creating a smooth tight fit. Attach Termination Bar to the backup wall. Termination Bars may not align horizontally.*

### 4 STEP FOUR

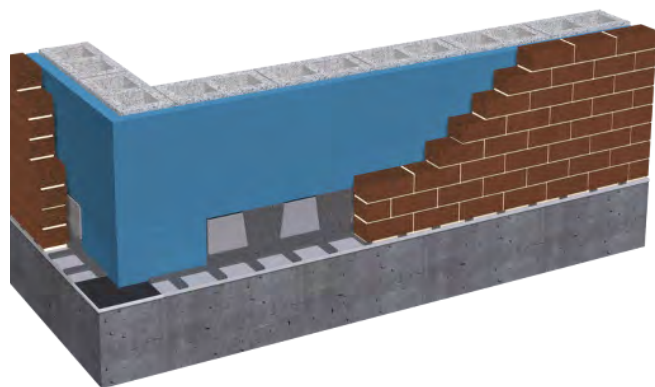
Install remaining sections using the lap system & adhesive, trim end section flush with corner drip. Caulk top of termination bar **D**. Use loose bricks to temporarily hold down TotalFlash while sealant / adhesive cures.

**Caulk top of Corner Boot**



### 5 STEP FIVE

Install remaining rigid insulation board.





## Installation Instructions/Packing Slip

### INSTALLATION GUIDE *INSIDE CORNER*

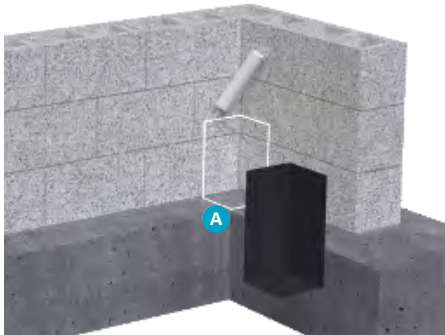
**Notes:**

- The use of Carborundum Saw blades to cut the Stainless Steel Drip Edge can result in a slight surface rust on any exposed metal.
- Muriatic Acid at any dilution is not recommended on Stainless Steel.
- Uses a 5/32" Drill Bit & 5/16" Nut Driver

1

#### STEP ONE

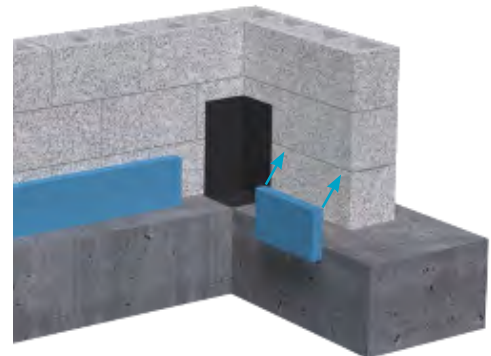
Install pre-formed 14" Corner Boot **A** using 1 bead of sealant / adhesive.



2

#### STEP TWO

Install 8" high sections of rigid insulation board against backup wall 12" from corner.

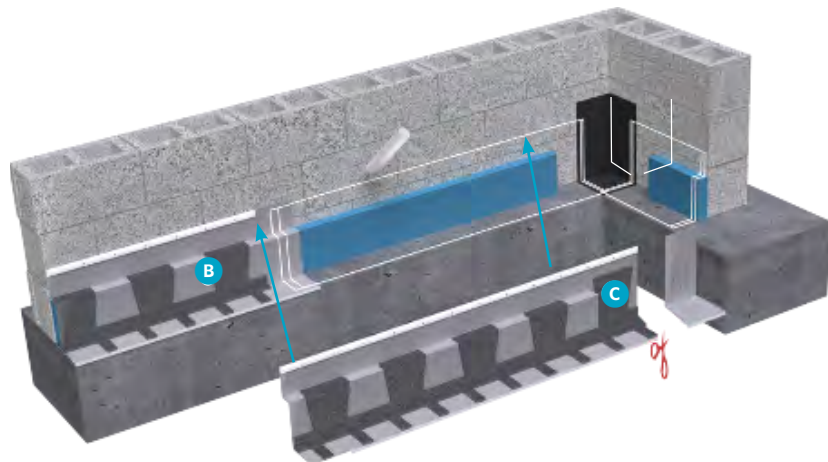


3

#### STEP THREE

Begin TotalFlash installation at the leftmost edge of the wall using the TotalFlash starter strip piece **B** (place it directly against the stainless steel corner piece previously set). Use sealant / adhesive applied horizontally behind termination bar and drip edge and two beads vertically at ends of TotalFlash panel as shown to the right. Trim off excess TotalFlash panel. **C**.

Install remaining sections using the lap system and sealant / adhesive. Caulk top of termination bar



**Sealant / Adhesive sets up quickly:**

*Install Drip Edge turn down bend, flush with the top corner of the veneer material. Install TotalFlash without a Drip Edge flush with the face of the veneer material following all current published industry standards. Create the crease at Drip Edge & backup wall until tight. Work the TotalFlash up the wall creating a smooth tight fit. Attach Termination Bar to the backup wall. Termination Bars may not align horizontally.*

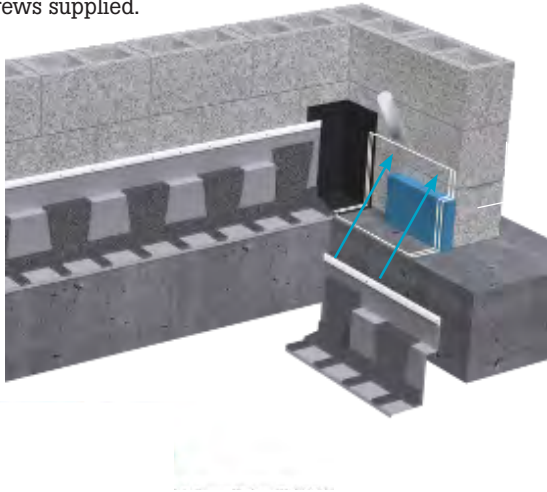


## Installation Instructions/Packing Slip

4

### STEP FOUR

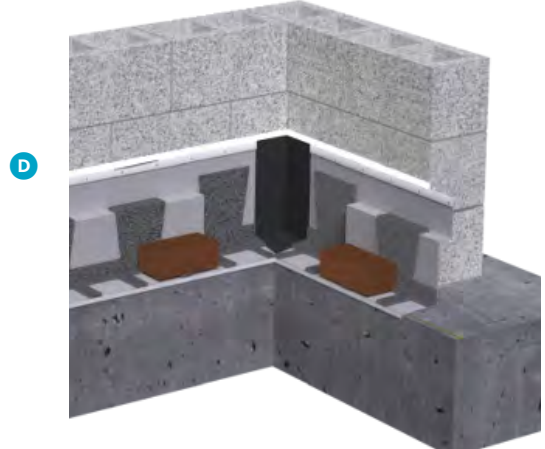
Trim the left side of the TotalFlash drip edge hem at 45° and install into inside corner with sealant / adhesive and termination bars screws supplied.



5

### STEP FIVE

Trim top of Corner Boot flush with Termination Bar. Caulk top of termination bar **D**. Loose brick units can be used to temporarily hold down TotalFlash while sealant / adhesive cures.



**Notes:**

- The use of Carborundum Saw blades to cut the Stainless Steel Drip Edge can result in a slight surface rust on any exposed metal.
- Muriatic Acid at any dilution is not recommended on Stainless Steel.
- Uses a 5/32" Drill Bit & 5/16" Nut Driver

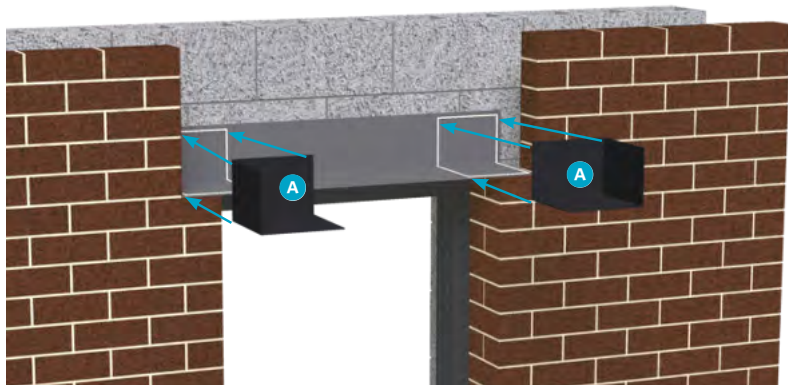
## INSTALLATION GUIDE B Window Head Flashing TotalFlash Installed in Front of Rigid Insulation Board

For even faster installation contact Mortar Net Solutions® to inquire about TotalFlash window head panels made to the exact size needed.

1

### STEP

Install pre-formed end dams **A** on both ends of opening using sealant / adhesive, trim to fit.





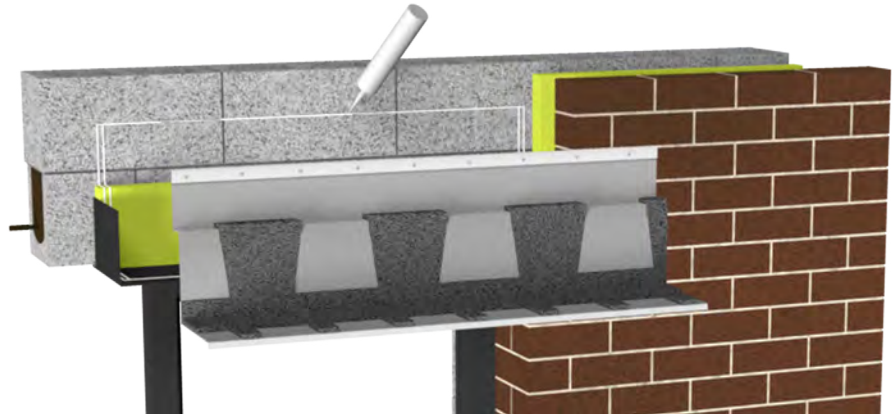
## Installation Instructions/Packing Slip

6/8

### 3 STEP THREE

Install first section of TotalFlash adjacent to end dam using sealant / adhesive and screws. Trim TotalFlash to fit opening.

For larger openings, install additional TotalFlash sections using the integrated lap system, sealant / adhesive and screws.



### 4 STEP FOUR

Caulk top of Termination Bar.



### 5 STEP FIVE

Install remaining rigid insulation board and install brick veneer.



**BEFORE PROCEEDING:** If you have questions or need more information, please contact Mortar Net Solutions® at **800-664-6638** or go to **[www.mortarnet.com](http://www.mortarnet.com)**

For even faster installation contact Mortar Net Solutions® to inquire about TotalFlash window head panels made to the exact size needed.



## Installation Instructions/Packing Slip

7/8

### INSTALLATION GUIDE B Window Head Flashing

#### TotalFlash Installed in Front of Rigid Insulation Board

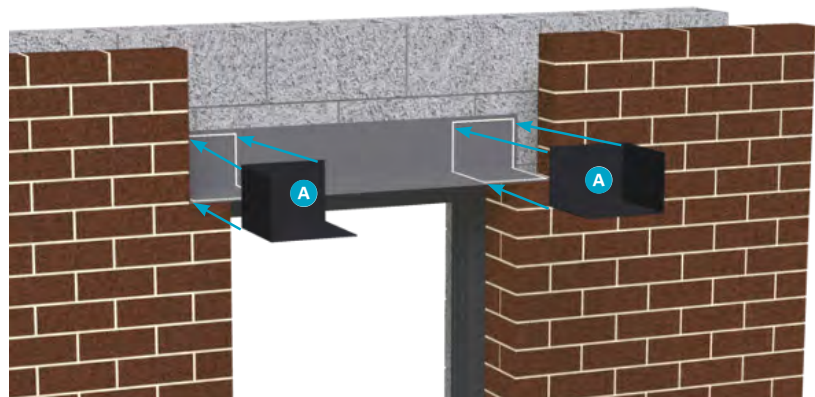
**Notes:**

- The use of Carborundum Saw blades to cut the Stainless Steel Drip Edge can result in a slight surface rust on any exposed metal.
- Muriatic Acid at any dilution is not recommended on Stainless Steel.
- Uses a 5/32" Drill Bit & 5/16" Nut Driver

For even faster installation contact Mortar Net Solutions® to inquire about TotalFlash window head panels made to the exact size needed.

#### 1 STEP

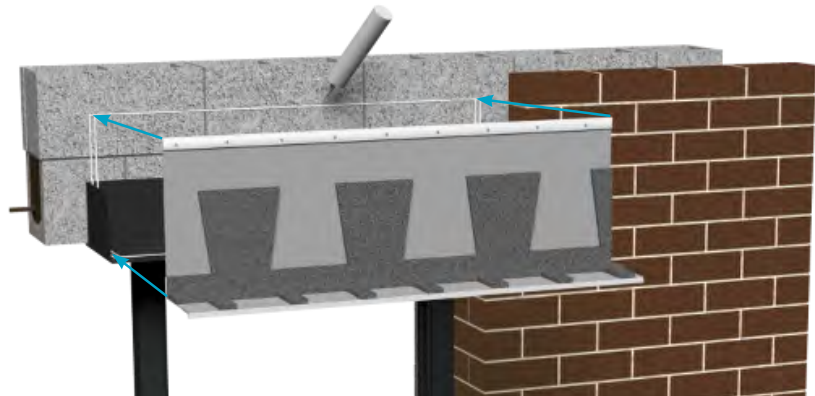
Install pre-formed end dams **A** on both ends of opening using sealant / adhesive, trim to fit.



#### 2 STEP TWO

Install first section of TotalFlash adjacent to end dam using sealant / adhesive and screws. Trim TotalFlash to fit opening.

For larger openings, install additional TotalFlash sections using the integrated lap system, sealant / adhesive and screws.





Moisture  
Management  
for Masonry

Your reputation. Your legacy. Our mission.

 TotalFlash®

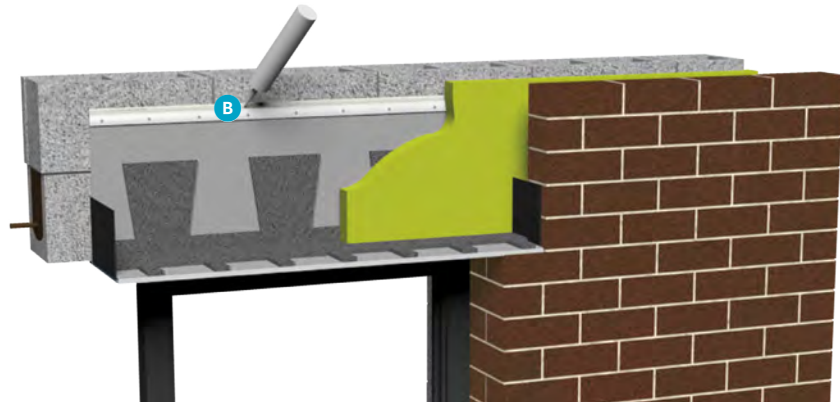
## Installation Instructions/Packing Slip

8/8

3

### STEP THREE

Caulk top of Termination Bar **B**. Install rigid insulation on top of TotalFlash. Install brick veneer above lintel.



**BEFORE PROCEEDING:** If you have questions or need more information, please contact Mortar Net Solutions® at **800-664-6638** or go to **[www.mortarnet.com](http://www.mortarnet.com)**