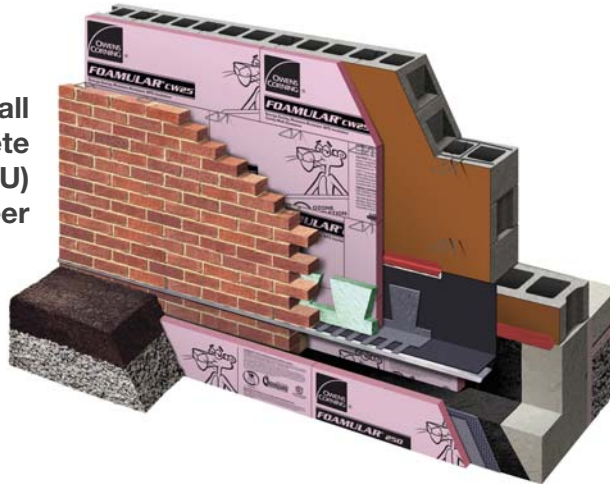


**CavityComplete® Wall Systems with Masonry Veneer**  
**FAQs**

**CavityComplete® Wall System for Concrete Masonry Unit (CMU) with Masonry Veneer**



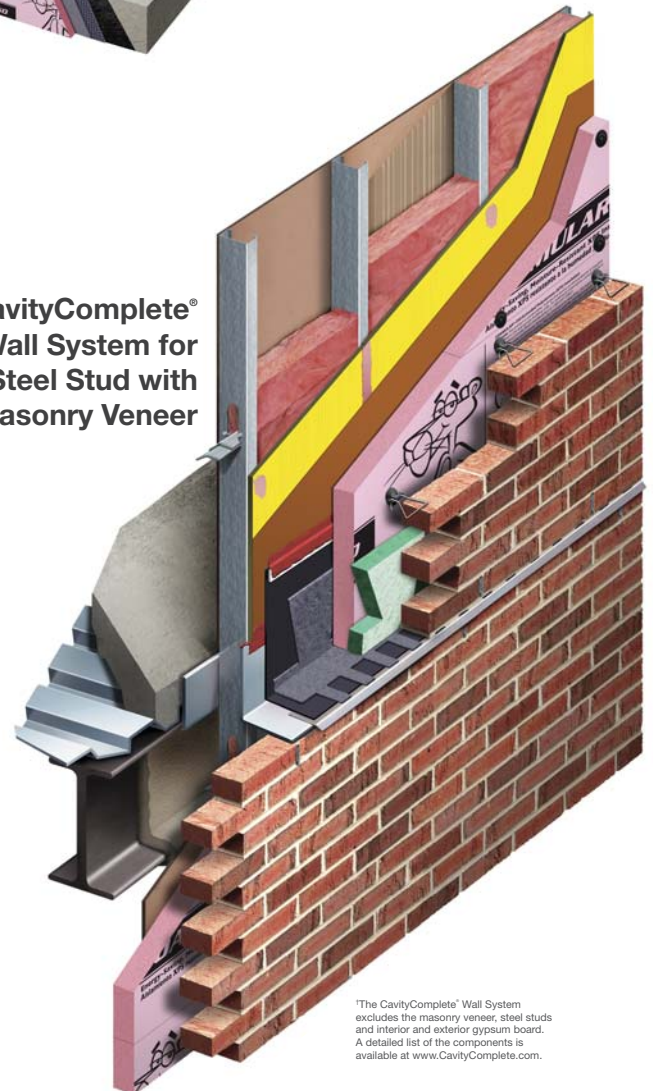
\*The CavityComplete® Concrete Masonry Unit (CMU) Wall System excludes the masonry veneer and concrete masonry units. A detailed list of the components is available at [www.CavityComplete.com](http://www.CavityComplete.com).

**CavityComplete® Wall System for Wood Stud with Masonry Veneer**



\*The CavityComplete® Wood Stud Wall System excludes the masonry veneer, wood studs, interior gypsum board and exterior sheathing. A detailed list of the components is available at [www.CavityComplete.com](http://www.CavityComplete.com).

**CavityComplete® Wall System for Steel Stud with Masonry Veneer**



\*The CavityComplete® Wall System excludes the masonry veneer, steel studs and interior and exterior gypsum board. A detailed list of the components is available at [www.CavityComplete.com](http://www.CavityComplete.com).

## CavityComplete<sup>®</sup> Wall Systems with Masonry Veneer

### FAQs

#### What are CavityComplete<sup>®</sup> Wall Systems?

CavityComplete<sup>®</sup> Wall Systems are completely tested, completely compatible<sup>1</sup>, and completely detailed masonry veneer wall systems that include options for steel stud, wood stud, and, concrete masonry unit (CMU) structural back-up<sup>2</sup>. These wall systems are a groundbreaking way to improve the performance of exterior wall assemblies. They make the complicated process of specifying exterior wall systems predictable by leveraging the knowledge and collaboration of market-leading manufacturers. They also provide systemized documentation from which architects can specify and that contractors can submit to building officials with complete confidence that the assembly is completely compatible and meets mandatory building code requirements for fire containment, air leakage, water penetration and thermal efficiency.

#### What do CavityComplete<sup>®</sup> Wall Systems do?

They are high-performance exterior wall assemblies that provide thermal efficiency, continuous insulation, air/water/vapor resistance, water drainage, and masonry anchors in one completely systemized approach. And, unlike other wall systems, CavityComplete<sup>®</sup> Wall Systems are jointly warrantied<sup>3</sup> in coverage with a single point of contact for all of the system parts across the five manufacturers.

#### What is new about CavityComplete<sup>®</sup> Wall Systems?

No other masonry veneer wall systems are so comprehensive in providing different construction types and all of the components necessary to provide thermal efficiency, air/water/fire resistance, and moisture/drainage management, along with structural masonry ties and sealing washers. The systems have been extensively tested, with every component included, to assure compatibility and performance as an exterior enclosure wall assembly. They also offer a comprehensive warranty for the systems on all of the components together, in addition to warranties on each individual component. CavityComplete<sup>®</sup> Wall Systems streamline the design process by providing complete specifications, CAD details and BIM objects, making your job to spec, bid and build much easier. They provide a single point of contact, a dedicated website and a toll-free number for questions and information.

#### Who are the partners, and what products make up CavityComplete<sup>®</sup> Wall Systems?

The list of products shown are used as needed, depending on the type of construction (steel stud, wood stud, or CMU back-up) and design requirements, to achieve thermal efficiency, air/water/vapor management, water drainage, fire resistance, and masonry veneer connections.

##### Owens Corning Sales, LLC

- FOAMULAR<sup>®</sup> 250 and CW25 Extruded Polystyrene (XPS) continuous insulation
- EcoTouch<sup>®</sup> PINK<sup>®</sup> FIBERGLAS<sup>™</sup> Insulation - steel or wood stud cavity batt
- EcoTouch<sup>®</sup> Flame Spread 25 - steel stud cavity batt
- Thermafiber<sup>®</sup> Firespan<sup>®</sup> 40 or 90 - mineral wool - steel stud cavity batt
- Thermafiber<sup>®</sup> Safing Insulation - mineral wool fire safing for perimeter fire containment

##### Mortar Net Solutions<sup>™</sup>

- TotalFlash<sup>®</sup> - thru wall flashing and cavity drainage
- MortarNet<sup>®</sup> with Insect Barrier<sup>™</sup> - mortar droppings protection
- WeepVent<sup>™</sup> - weep hole protection
- BTL-1 - sealant

##### Prosoco

- PROSOCO R-Guard<sup>®</sup> Cat 5<sup>®</sup>
- PROSOCO R-Guard<sup>®</sup> FastFlash<sup>®</sup>
- PROSOCO R-Guard<sup>®</sup> Joint & Seam Filler
- PROSOCO R-Guard<sup>®</sup> AirDam
- PROSOCO R-Guard<sup>®</sup> PorousPrep

##### Heckmann Building Products Inc.

- Pos-I-Tie<sup>®</sup> - masonry veneer anchoring system with ThermalClip<sup>®</sup>
- #1300 Hook & Ladder Joint Reinforcement
- #1300 Pintle Wire Tie

##### Rodenhouse, Inc.

- Grip-Deck<sup>™</sup> - screw fasteners
- Thermal-Grip<sup>®</sup> - air sealing washers to attach insulation with screws and brick-ties

#### Does the CavityComplete<sup>®</sup> Wall Systems include steel stud, wood stud, or CMU back-up?

Completely tested and warrantied CavityComplete<sup>®</sup> Wall Systems are currently available for steel stud, wood stud, and concrete masonry unit (CMU) back-up. That variety enables CavityComplete<sup>®</sup> Wall Systems to be used in any bearing or non-load bearing walls of Type I, II, III, IV or V construction as defined in the International Building Code.

#### How do CavityComplete<sup>®</sup> Wall Systems compare to other wall “systems” in the market today?

Most other “systems” are a few products produced by a single manufacturer which encompass only parts of the wall and include only individual product warranties. Only CavityComplete<sup>®</sup> Wall Systems include products from five industry leaders, encompass the entire wall<sup>2</sup> and offer a limited system warranty<sup>3</sup>.

#### Since CavityComplete<sup>®</sup> components come from five different manufacturers, how does its component compatibility compare to the compatibility of wall system components that all come from one manufacturer?”

Compatibility is proven by testing, and CavityComplete<sup>®</sup> components have been rigorously tested by industry-recognized third parties to ensure compatibility. The fact that a wall system’s components all come from one manufacturer is, by itself, no guarantee the components are compatible.

### What cost premium will I pay for CavityComplete® Wall Systems?

There is no cost premium associated with CavityComplete® Wall Systems. The components of the systems are sold through normal distribution channels just as they have always been. The cost will be comparable to similar walls made of similar components. However, only CavityComplete® Wall Systems give you the assurance of a completely tested wall system, with full system code compliance, pre-determined compatibility, and a limited system warranty. There are cheaper ways to build walls by omitting critical components. But, those are not comparable high performance walls, and they are not CavityComplete® Wall Systems.

### What are the major test standards that CavityComplete® Wall Systems meet and document?

In addition to each individual component being tested by its manufacturer for relevant performance characteristics, the components have also been tested individually or in the full CavityComplete® Wall Systems as listed:

Test Name*	Test Type	Test Purpose
NFPA 285	system	exterior wall surface fire propagation
ASTM E119	system	timed structural fire resistance
ASTM E2307	system	perimeter fire containment joint
ASTM E2357	system	air barrier performance
ASTM E331	system	water resistance
ASTM C794	component to component	adhesion
AAMA 713	component to component	compatibility
ASTM C1338	component	insulation mold resistance
GREENGUARD Gold	component	insulation indoor air quality (FOAMULAR® XPS and EcoTouch® Insulation)
Recycled Content, SCS third party certified	component	insulation (FOAMULAR® XPS and EcoTouch® Insulation)

### Where are test results available for CavityComplete® Wall Systems?

Visit [www.CavityComplete.com](http://www.CavityComplete.com) or call 1-844-CAV-COMP (844-228-2667).

### Why are CavityComplete® Wall Systems better than buying/specing individual components?

With CavityComplete® Wall Systems, all of the components have been tested to assure complete compatibility and performance, and they include warranties for each individual component plus a limited warranty for all of the components performing as a system. If specifying individual components, you not only need to know which are the right components (with the right level of quality) to deliver the performance you are looking for, but you also need to be certain that all of the parts are compatible to work together to meet the broad range of industry standards today's codes require. For masonry veneer cavity walls, CavityComplete® Wall Systems have done all of this homework for you.

### I already have a CavityComplete® wall system in an existing specification. How do I update it to reflect the new air barrier partner?

If a specification was developed before September 5, 2016, it is no longer valid and needs to be replaced with the new specification posted on [www.cavitycomplete.com](http://www.cavitycomplete.com)

If you have any questions or concerns, call 844-CAV-COMP (844-228-2667) or email [cavitycomplete@owenscorning.com](mailto:cavitycomplete@owenscorning.com).

### Why did Tremco exit the CavityComplete® program?

As a business practice, Owens Corning doesn't speak on behalf of current or former business partners. However, the vision of the CavityComplete® program remains unchanged. The partnership will continue to help architects efficiently and confidently specify compatible, code-compliant, and warrantied wall systems.

### Were there any quality-related issues that drove this change?

No. The change is the result of a mutual business decision and does NOT reflect any quality or performance issues. All CavityComplete® systems still meet the same rigorous standards and testing as before.

### When will CavityComplete.com be updated to reflect PROSOCO information?

We will be updating the CavityComplete.com website in two phases. Effective November 15, 2016, the following information will be accessible online:

- Sell Sheets
- CSI 3-Part Specification
- CAD Details
- Technical Bulletins
- Product Data Sheets
- Warranty Info
- Safety Data Sheets
- Additional documents including installation instructions, sustainability documents and other information will follow as they are available.

### Why were these particular components and manufacturers chosen to make up CavityComplete® Wall Systems?

All of the CavityComplete® Wall Systems partners are leaders in their respective product areas and have established outstanding reputations for quality, service and support. The portfolio of products and construction types were chosen to be adequately diverse to cover most design needs, including the accessories to make it all work as a system.

\*Not all tests are applicable to all products and/or systems. See the specific system for detailed information at [www.cavitycomplete.com](http://www.cavitycomplete.com).

### **What parts of the walls are generic and not included in CavityComplete<sup>®</sup> Wall Systems for masonry veneer?**

The generic components are wood or steel studs, concrete masonry units (CMU), the interior gypsum board, the exterior sheathing and the masonry veneer. Those products must be specified and installed in accordance with code compliant, standard industry practices.

### **Do CavityComplete<sup>®</sup> Wall Systems require special training or certified contractor installation?**

No. All systems and all components and their installation procedures are familiar and common, so any experienced masonry, insulation or air barrier contractor will likely need no training or certification beyond what would be necessary if the products were installed individually. Full installation instructions can be found at [www.CavityComplete.com](http://www.CavityComplete.com).

### **Must all the recommended products appropriate for a particular design be used or specified for CavityComplete<sup>®</sup> Wall Systems to work?**

Yes. If substitutions are made, the components will not be guaranteed to be compatible, the fire propagation and air/water leakage test results will not be valid, and the system warranty will not be provided.

### **Are CavityComplete<sup>®</sup> Wall Systems sold and delivered as one package or are the components purchased separately?**

As has always been the case, the separate components are readily available through your preferred distributors. Call 1-844-CAV-COMP (844-228-2667) or visit [www.CavityComplete.com](http://www.CavityComplete.com) to find distributors near your job.

### **Who do I call for warranty claims?**

1-844-CAV-COMP (844-228-2667).

### **How do I get the warranty?**

The process is simple. Submit a Project Profile form at the beginning of the project to verify project eligibility, and a Project Completion Notification at the end to verify completion in accordance with approved details. Please visit [www.CavityComplete.com](http://www.CavityComplete.com) for full details.

### **How long is the system warranty, and how do I know it will be valid?**

The CavityComplete<sup>®</sup> Wall Systems limited warranty is for a 10-year period after project completion. The CavityComplete<sup>®</sup> Manufacturers Group have entered into a Joint Marketing Agreement that defines their obligations to each other and to the system warranty. As such, the warranty is supported for its term by the five industry leaders who developed it, each of which has a well established performance record for longevity, quality and dependability.

### **Does the CavityComplete<sup>®</sup> Wall Systems include steel stud, wood stud, or CMU back-up?**

Completely tested and warrantied CavityComplete<sup>®</sup> Wall Systems are currently available for steel stud, wood stud, and concrete masonry unit (CMU) back-up. That variety enables CavityComplete<sup>®</sup> Wall Systems to be used in any bearing or non-load bearing walls of Type I, II, III, IV or V construction as defined in the International Building Code.

### **Where can I get training on how to spec/install CavityComplete<sup>®</sup> Wall Systems?**

Visit [www.CavityComplete.com](http://www.CavityComplete.com), or, call 1-844-CAV-COMP (844-228-2667) to access system details, view system installation videos, or to schedule AIA/CES learning opportunities. (NOTE: These materials will be posted to the website as they are updated in early 2017.)

### **Where can I get installation details for windows, doors, corners, wall penetrations, etc.?**

Visit [www.CavityComplete.com](http://www.CavityComplete.com) to access installation instructions and videos, architectural details, CSI 3-part specifications and BIM objects. (NOTE: These materials will be posted to the website as they are updated in early 2017.)

### **Who do I call if I have a problem or question?**

Call 1-844-CAV-COMP (844-228-2667) or send your question to [cavitycomplete@owenscorning.com](mailto:cavitycomplete@owenscorning.com).

- 1 The CavityComplete<sup>®</sup> Wall Systems components were successfully tested and found to be fully compatible with each other in the system. Test results are available at [www.CavityComplete.com/testing](http://www.CavityComplete.com/testing).
- 2 The CavityComplete<sup>®</sup> Wall Systems excludes the masonry veneer, wood or steel studs, concrete masonry units, and interior gypsum board and exterior sheathing. A detailed list of the components is available at [www.CavityComplete.com](http://www.CavityComplete.com).
- 3 See actual limited warranty for complete details, requirements and limitations available at [www.CavityComplete.com](http://www.CavityComplete.com).