



## A POLYESTER MESH THAT PROVIDES A CONTINUOUS DRAINAGE PLANE

Helps keep brick, stucco, stone and siding-veneered buildings dry

### Use

- For all veneer systems, including brick, lap siding, rainscreen systems, and stone and stucco veneers

### Benefits

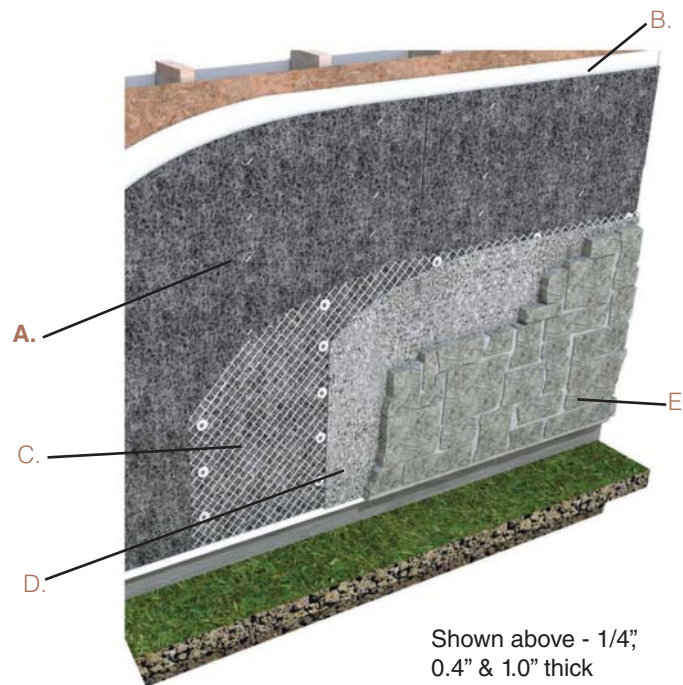
- Prevents mortar damming behind masonry veneers
- Provides multiple pathways for water to flow to weeps
- Can be applied to all substrates
- Allows air movement in the cavity to help promote drying

### Product Characteristics

- Clean, non-toxic, and will not oxidize or react with common building materials
- Remains flexible and undamaged in a wide range of temperatures

### Sizes and Packaging

COLOR	THICKNESS	HEIGHT	SF/ROLL
Gray	1/4"	30"	250 SF
Gray	0.4"	30"	125 SF
Gray	1.0"	30"	100 SF
Off-white	2.0"	30"	50 SF



Shown above - 1/4",  
0.4" & 1.0" thick

Simple installation and outstanding customer support make it easy for masons to quickly install WallNet

#### A. WallNet

B. Weather resistive barrier

C. Metal lath

D. Scratch coat / mortar bed

E. Thin stone veneer

*Please see other side for installation instructions*



Moisture  
Management  
for Masonry



## INSTALLATION INSTRUCTIONS OVERVIEW

### Installation Guide

#### 1/4", 0.4", 1", & 2" Sizes

##### 1. Weather Resistive Barrier

Install weather resistive barrier (WRB) over sheathing consulting applicable building codes. Provide minimum 6" vertical laps and 3" horizontal laps. Lap WRB over weep screed. Begin WRB install at base of wall and lap subsequent sheets over the sheet below.

##### 2. WallNet™

Install WallNet after windows and doors are installed. Begin at the base of the wall and unroll and fasten using staples (min. 1/2") or using wrap cap screws or nails at a spacing of 1 anchor per 3 sq. ft. of wall area. Install WallNet in a shingle fashion, staggering vertical seams.

##### 3. Metal Lath

Install galvanized metal lath according to applicable building code and stone veneer manufacturer's instructions. Fasteners are required to be located at stud locations and must penetrate studs a minimum of 1". Be sure to take into account the depth of the Wallnet when specifying fastener length.

##### 4. Scratch Coat/Mortar Bed

Install scratch coat and mortar bed per manufacturer.

##### 5. Thin Stone Veneer/Manufactured Stone/Stucco

WallNet



---

For more information  
call 800.664.6638

---



Moisture  
Management  
for Masonry

326 Melton Rd., Burns Harbor, IN 46304  
P 800 664 6638 F 219 787 5088  
www.mortarnet.com