

THE ORIGINAL MORTAR DROPPING COLLECTION DEVICE

Over 20 years of installations. Thousands of walls.
Not a single wall failure.

Use

- As a mortar dropping collection device for masonry cavity walls

Benefits

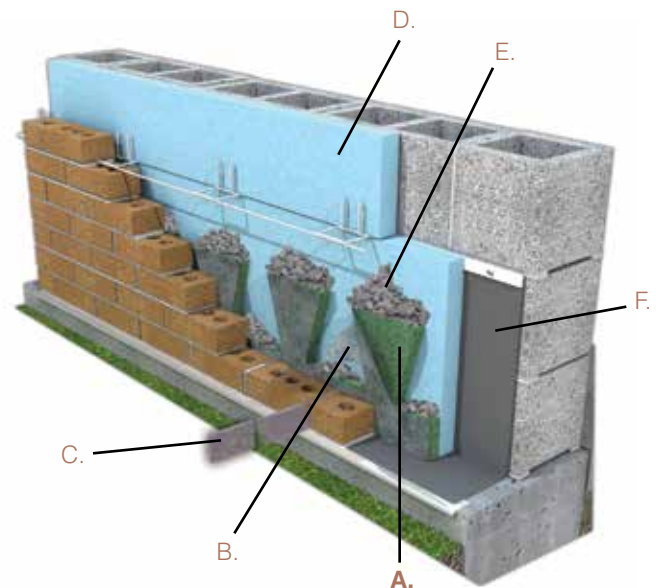
- Trapezoidal shape breaks up and suspends mortar droppings above the flashing on two levels so weeps stay open
- 90% open-weave mesh construction provides hundreds of pathways for moisture to exit the cavity
- Patented Insect Barrier helps prevent wall damage and health hazards from insect infestations
- Is very permeable to air, water and water vapor due to the low fiber density of the non-woven structure
- Installs easily on brick ties in multi-story cavity walls

Product Characteristics

- Clean, non-toxic, and will not oxidize or react with common building materials

Sizes and Packaging

THICKNESS	HEIGHT	LENGTH	LF/BOX
0.4"	10"	5'	250 LF
1"	10"	5'	100 LF
2"	10"	5'	100 LF



A simple installation process and outstanding customer support make it easy for masons to install MortarNet

A. MortarNet

B. Insect Barrier

C. WeepVent

D. Rigid insulation

E. Mortar Droppings

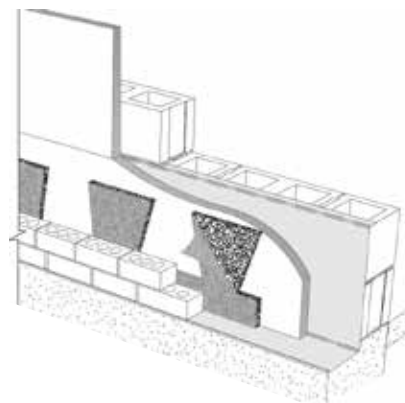
F. Flashing Membrane

Please see other side for installation instructions



INSTALLATION INSTRUCTIONS OVERVIEW

- After the first course or two of brick are laid, place a continuous row of MortarNet with Insect Barrier in the cavity on the flashing (trapezoidal side up, mesh fabric facing out) against the inside of the outer wythe at the base of the wall.
- MortarNet with Insect Barrier must be used in conjunction with an impermeable through-wall flashing that extends to at least 6" above the MortarNet with Insect Barrier. Any other materials used to fill the space between the MortarNet with Insect Barrier and the inside surface of the cavity must also extend at least 6" above the top of MortarNet with Insect Barrier.
- Multiple thicknesses of MortarNet with Insect Barrier may be used to fill the cavity-width. Be sure the trapezoidal-shaped sections are aligned with each other and the mesh fabric faces out.
- Install MortarNet with Insect Barrier directly on the flashing at the base of the wall and over all wall openings, shelf angles, sills and lintels. For cavity walls that exceed 11' in height, place an additional continuous trapezoidal strip on wall reinforcing anchors and ties at every 9'-11' of wall height.
- If 1" or 2" thick MortarNet with Insect Barrier is used, no more than 1/4" should be left between MortarNet with Insect Barrier and the cavity's inside surfaces (flashing or filler).
- 0.4" MortarNet with Insect Barrier should touch both cavity surfaces, or can be used as filler with other widths of MortarNet with Insect Barrier.
- MortarNet with Insect Barrier is compressible to allow for variations in wall cavity widths.



MortarNet



For more information
call 800.664.6638



Masonry
Management
for Masonry

326 Melton Rd., Burns Harbor, IN 46304
P 800 664 6638 F 219 787 5088
www.mortar.net