



Installation Instructions/Packing Slip

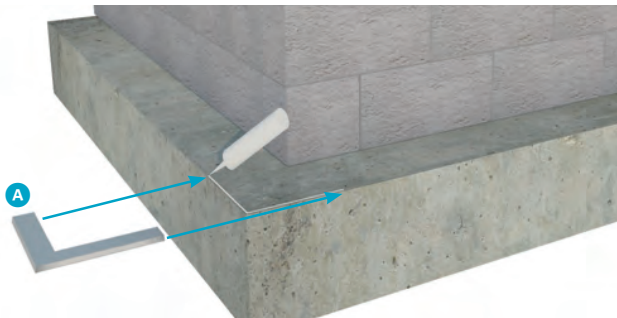
INSTALLATION GUIDE A

Notes:

- The use of Carborundum Saw blades to cut the Stainless Steel Drip Edge can result in a slight surface rust on any exposed metal.
- Muriatic Acid at any dilution is not recommended on Stainless Steel.
- Uses a 5/32" Drill Bit & 5/16" Nut Driver

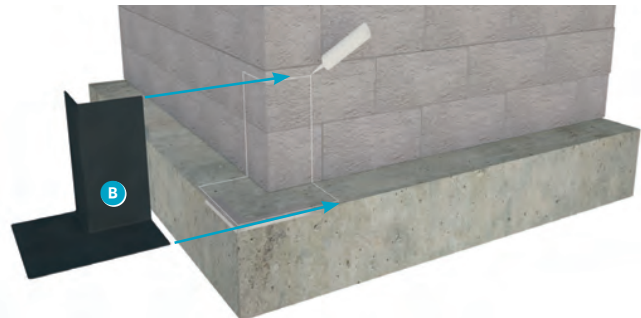
1 STEP ONE

Apply sealant / adhesive to prefabricated Stainless Steel Corner **A** using 1 bead of adhesive.



2 STEP TWO

Install pre-formed 14" Corner Boot **B** using 1 bead of sealant / adhesive.



3 STEP THREE

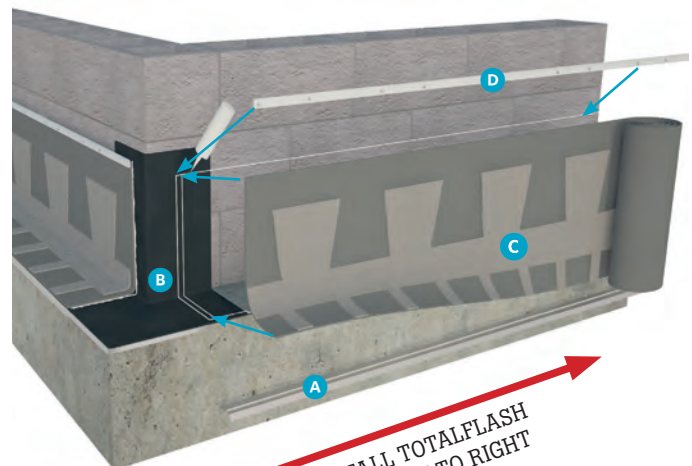
Apply a bead of sealant under the Drip Edge and place directly on brick shelf **A**.

Apply two vertical beads of sealant at the left edge of the TotalFlash Roll **B** where it meets the Corner Boot and two additional beads of sealant at the rear of the Termination Bar and top of Drip Edge.

Place the TotalFlash Roll **C** in place and attach Termination Bar **D** to the flashing. Apply a bead of sealant on top side of Termination Bar to allow water to flow over termination bar to the flashing. **NOTE:** When using **rubberized asphalt** it is recommended that the edge of the membrane be kept away from the face of the wall by 3/4".

Sealant / Adhesive sets up quickly:

Install Drip Edge turn down bend, flush with the top corner of the veneer material. Install TotalFlash without a Drip Edge flush with the face of the veneer material following all current published industry standards. Create the crease at Drip Edge & backup wall until tight. Work the TotalFlash up the wall creating a smooth tight fit. Attach Termination Bar to the backup wall. Termination Bars may not align horizontally.



INSTALL TOTALFLASH FROM LEFT TO RIGHT

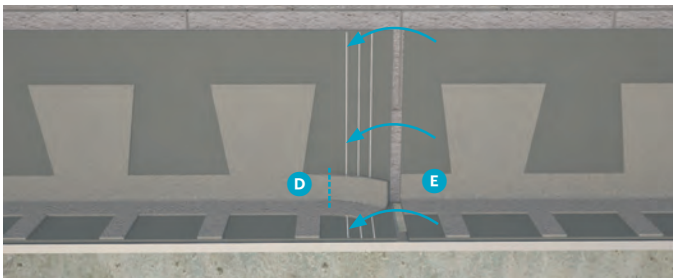


Installation Instructions/Packing Slip

2/5

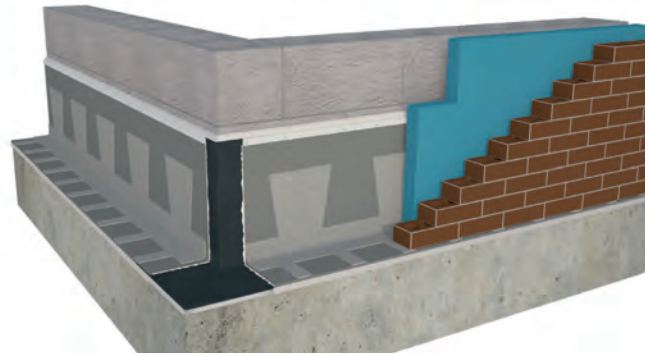
4 LAPPING THE TOTALFLASH® ROLL

Lapping the TotalFlash Roll Product is as easy as making one cut to the right of a dovetail center where the drainage mat is not adhered to the membrane **E**. Simply remove the loose drainage mat from the membrane and lap the next piece directly to the membrane that is exposed **F**. **It is okay if the large portion of the dovetail pattern is directly adjacent to the previous dovetail.**



5 STEP FIVE

Install remaining rigid board insulation (if required) over TotalFlash. Lay a mortar bed directly on the TotalFlash weep tabs and install the brick veneer. For proper drainage, ensure the tips of the weep tabs are exposed when tooling the first mortar joint.



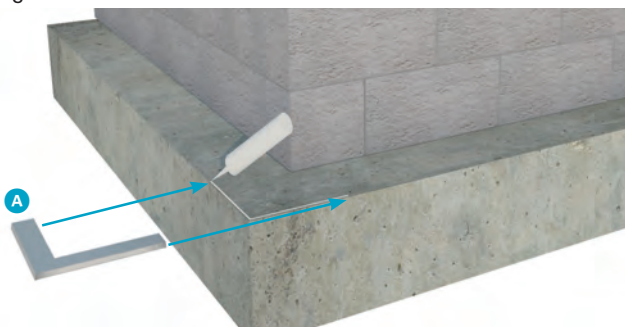
INSTALLATION GUIDE B

Notes:

- The use of Carborundum Saw blades to cut the Stainless Steel Drip Edge can result in a slight surface rust on any exposed metal.
- Muriatic Acid at any dilution is not recommended on Stainless Steel.
- Uses a 5/32" Drill Bit & 5/16" Nut Driver

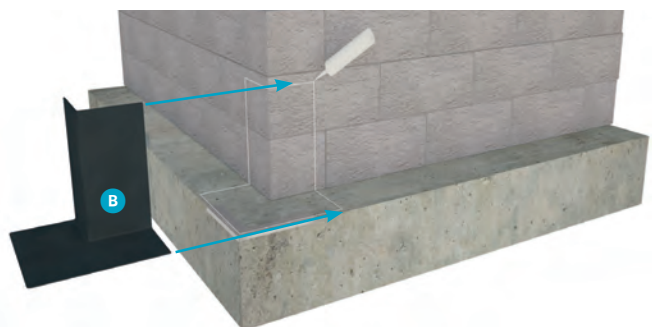
1 STEP ONE

Apply sealant / adhesive to prefabricated Stainless Steel Corner **A** using 1 bead of adhesive.



2 STEP TWO

Install pre-formed 14" Corner Boot **B** using 1 bead of sealant / adhesive.





Installation Instructions/Packing Slip

3/5

3

STEP THREE

Install 8" high sections of rigid insulation board against back up wall. Apply a bead of sealant under the Drip Edge **A** and place directly on brick shelf.

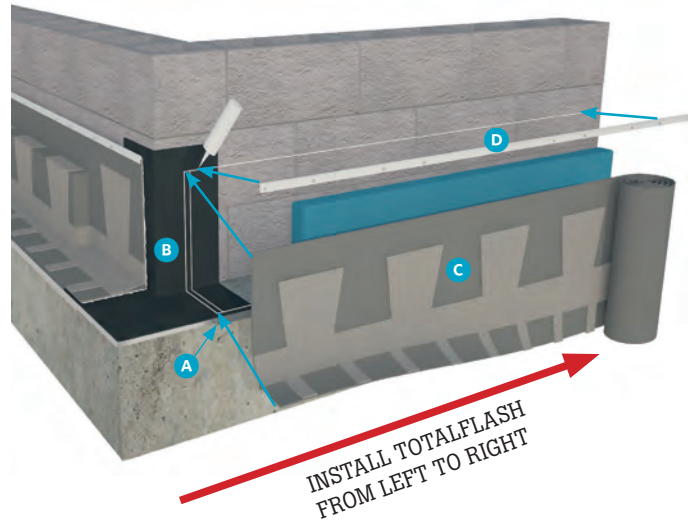
Apply two vertical beads of sealant at the left edge of the TotalFlash Roll **B** where it meets the Corner Boot and two additional beads of sealant at the rear of the Termination Bar and top of Drip Edge.

Place the TotalFlash Roll **C** in place and attach Termination Bar **D** to the flashing. Apply a bead of sealant on top side of Termination Bar to allow water to flow over Termination Bar to the flashing.

NOTE: When using **rubberized asphalt** it is recommended that the edge of the membrane be kept away from the face of the wall by 3/4".

Sealant / Adhesive sets up quickly:

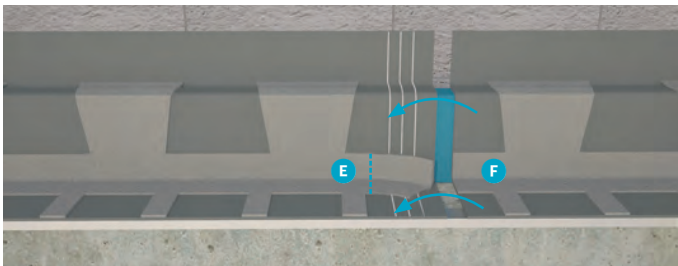
Install Drip Edge turn down bend, flush with the top corner of the veneer material. Install TotalFlash without a Drip Edge flush with the face of the veneer material following all current published industry standards. Create the crease at Drip Edge & backup wall until tight. Work the TotalFlash up the wall creating a smooth tight fit. Attach Termination Bar to the backup wall. Termination Bars may not align horizontally.



4

LAPPING THE TOTALFLASH® ROLL

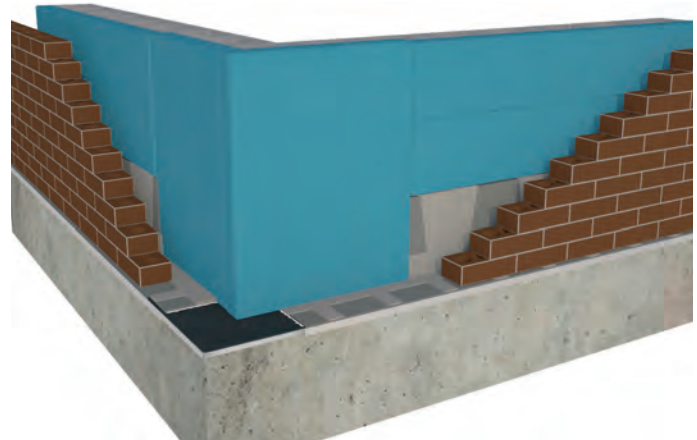
Lapping the TotalFlash Roll Product is as easy as making one cut to the right of a dovetail center where the drainage mat is not adhered to the membrane **E**. Simply remove the loose drainage mat from the membrane and lap the next piece directly to the membrane that is exposed **F**. **It is okay if the large portion of the dovetail pattern is directly adjacent to the previous dovetail.**



5

STEP FIVE

Install remaining rigid insulation board.





Installation Instructions/Packing Slip

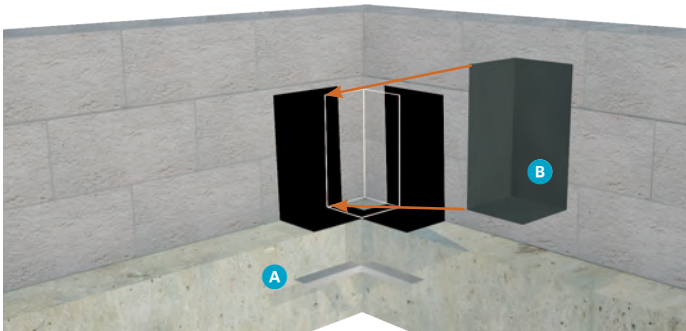
INSTALLATION GUIDE *INSIDE CORNER*

Notes:

- The use of Carborundum Saw blades to cut the Stainless Steel Drip Edge can result in a slight surface rust on any exposed metal.
- Muriatic Acid at any dilution is not recommended on Stainless Steel.
- Uses a 5/32" Drill Bit & 5/16" Nut Driver

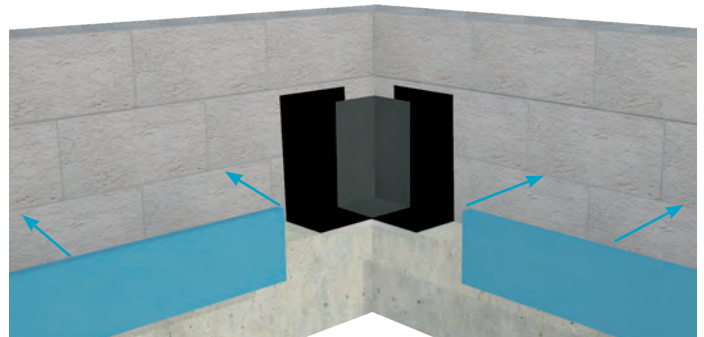
1 STEP ONE

Install Adjustable Corner **A** and pre-formed 14" Corner Boot **B** using 1 bead of sealant / adhesive.



2 STEP TWO

Install 8" high sections of rigid insulation board against backup wall 12" from corner if required.

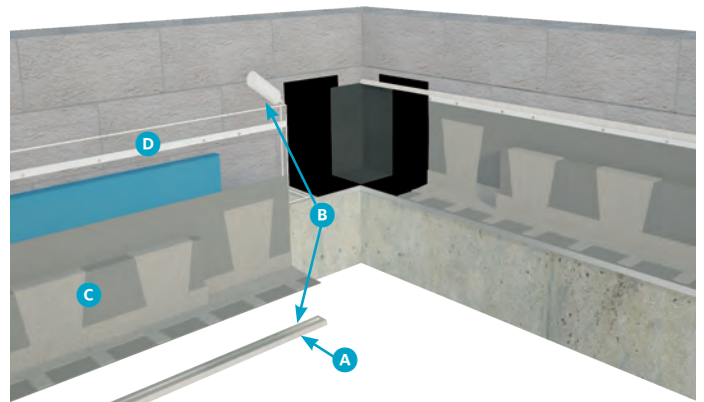


3 STEP THREE

Apply a bead of sealant under the Drip Edge **A** and place directly on brick shelf.

Apply two vertical beads of sealant at the left edge of the TotalFlash® Roll **B** where it meets the Corner Boot and two additional beads of sealant at the rear of the Termination Bar and top of Drip Edge.

Place the TotalFlash® Roll **C** in place and attach Termination Bar **D** to the flashing. Apply a bead of sealant on top side of Termination Bar to allow water to flow over Termination Bar to the flashing.



Sealant / Adhesive sets up quickly:

Install Drip Edge turn down bend, flush with the top corner of the veneer material. Install TotalFlash without a Drip Edge flush with the face of the veneer material following all current published industry standards. Create the crease at Drip Edge & backup wall until tight. Work the TotalFlash up the wall creating a smooth tight fit. Attach Termination Bar to the backup wall. Termination Bars may not align horizontally.

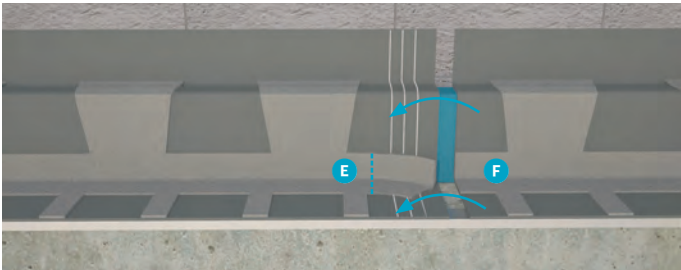


Installation Instructions/Packing Slip

5/5

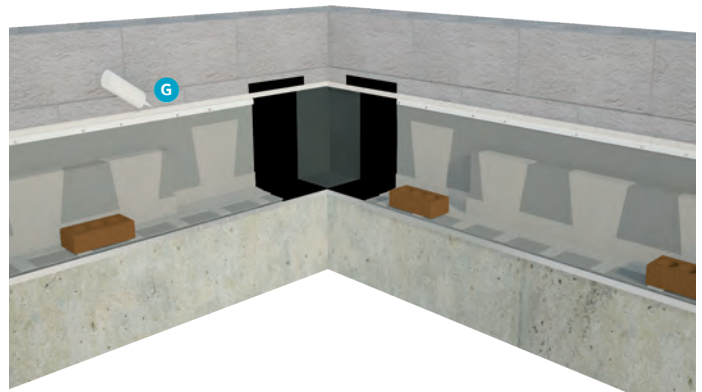
4 LAPPING THE TOTALFLASH® ROLL

Lapping the TotalFlash® Roll Product is as easy as making one cut to the right of a dovetail center where the drainage mat is not adhered to the membrane **E**. Simply remove the loose drainage mat from the membrane and lap the next piece directly to the membrane that is exposed **F**. **It is okay if the large portion of the dovetail pattern is directly adjacent to the previous dovetail.**



5 STEP FIVE

Caulk top of Termination Bar **G**. Loose brick units can be used to temporarily hold down TotalFlash® while sealant / adhesive cures.



For Technical Support or if you have any questions regarding this product, please call 1-800-664-6638 or visit our website at www.mortarnet.com