

Installation

Mortar Net Weep Vents™

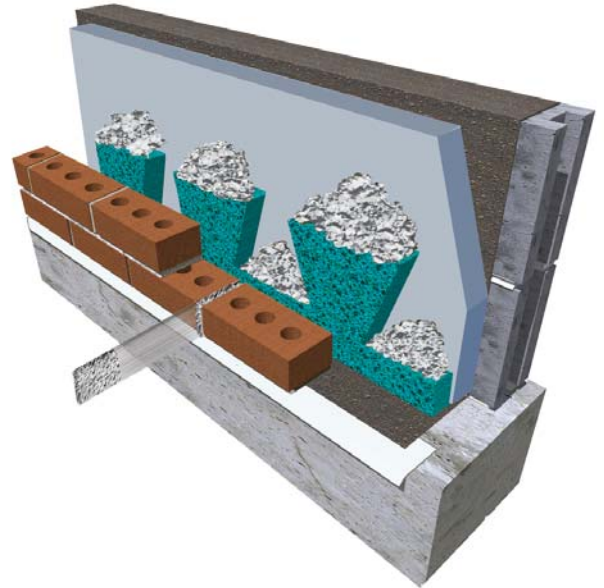
INSTALLATION

MORTAR NET WEEP VENTS™ are easy to install. Insert a Mortar Net Weep Vent™ no more than 24 inches apart into the open weep holes to allow cavity walls to breathe, drain, and dry quickly.

IMPORTANT

◆Mortar Net Weep Vents™ are 2-5/8" x 3-1/2" x 1/2" and should be placed no more than 24 inches apart into the open weep hole.

◆Mortar Net Weep Vents™ will fit snugly into the weep holes to prevent blockage by insects and debris.



Mortar Net Weep Vents™ should be installed only by experienced masons in properly specified weep hole systems.

For Technical Support or if you have questions regarding this product, please call 1-800-664-6638.