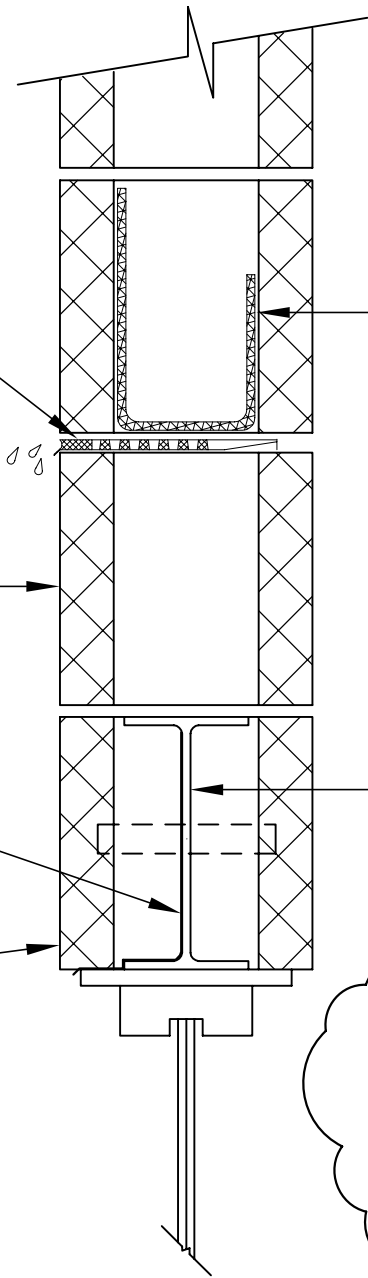


BLOK-FLASH®

EXTERIOR 8" CMU W/ INTEGRAL WATER REPELLANT IN CMU & MORTAR

SELF-ADHERING MEMBRANE FLASHING

2" SOLID



DRAINAGE MATTE

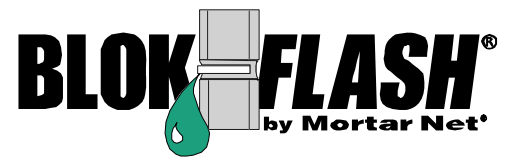
GALV. STEEL

NOTE-SIMILAR DETAIL MAY BE USED FOR O.H. DOOR LOCATIONS

NOTES:

- BLOK-FLASH PERFORMS BEST WHEN INSTALLED IN CMU BED JOINTS LOCATED ABOVE FINISHED GRADE AND BELOW FINISHED FLOOR HEIGHT.

Detail No. BFH-8



8" Single-Wythe I-Beam Lintel

No. 4,910,931, No.5,870,864, No. 6,202,366 and No. 6,912,820 B2. Additional Patents Pending