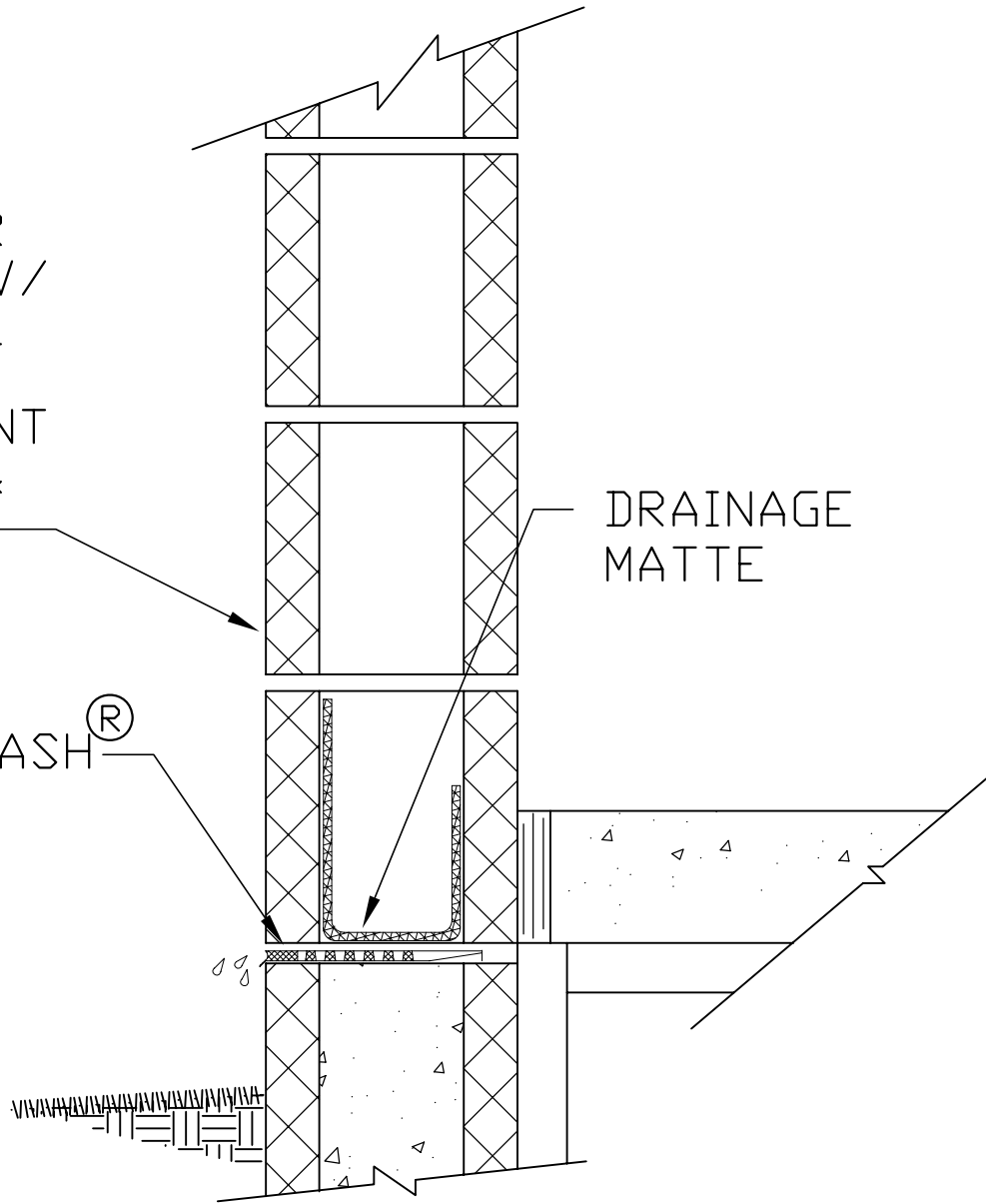


EXTERIOR  
8" CMU W/  
INTEGRAL  
WATER  
REPELLANT  
IN CMU &  
MORTAR

DRAINAGE  
MATTE

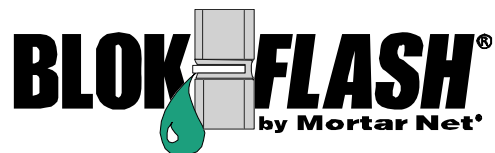
BLOK-FLASH<sup>®</sup>



NOTES:

- BLOK-FLASH PERFORMS BEST WHEN INSTALLED IN CMU BED JOINTS LOCATED ABOVE FINISHED GRADE AND BELOW FINISHED FLOOR HEIGHT.

Detail No.  
BFB-1



8" Single-Wythe  
Base

No. 4,910,931, No.5,870,864, No. 6,202,366 and No. 6,912,820 B2. Additional Patents Pending



**Mortar Net**<sup>®</sup>  
USA LTD.

326 Melton Road • Burns Harbor, IN 46304 • (800) 664-6638 • [www.MortarNet.com](http://www.MortarNet.com)