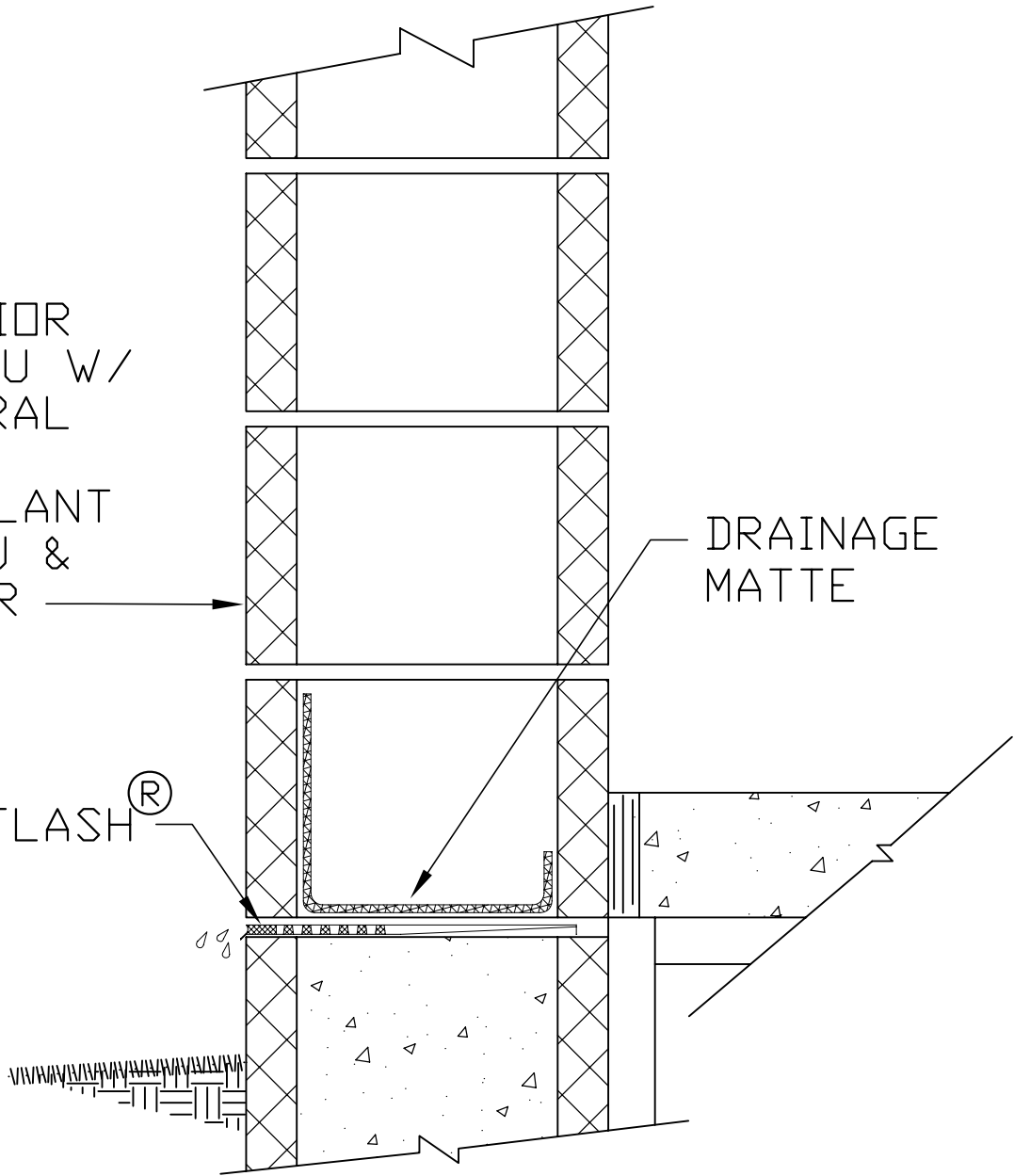


EXTERIOR
12" CMU W/
INTEGRAL
WATER
REPELLANT
IN CMU &
MORTAR

DRAINAGE
MATTE

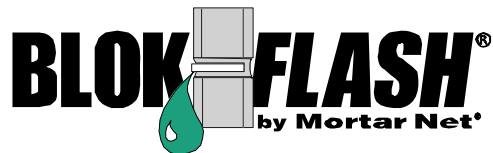
BLOK-FLASH[®]



NOTES:

- BLOK-FLASH PERFORMS BEST WHEN INSTALLED IN CMU BED JOINTS LOCATED ABOVE FINISHED GRADE AND BELOW FINISHED FLOOR HEIGHT.

Detail No.
BFB-2



No. 4,910,931, No.5,870,864, No. 6,202,366 and No. 6,912,820 B2. Additional Patents Pending

12" Single-Wythe
Base



Mortar Net[®]
USA LTD.

326 Melton Road • Burns Harbor, IN 46304 • (800) 664-6638 • www.MortarNet.com